

SAFEHINGE PRIMERA

SOP098 Revision (1)

In the event of an emergency

Unlike conventional access control products, the electronic control equipment included in the Primera PASSPORT lockset is fitted on the outside of the door. This significantly reduces the opportunities for service users to tamper with the device without clinical staff intervention.

PASSPORT comes fully equipped with a concealed and independent barricade override mechanism which ensures clinical staff can gain access at any time! Even in the event of an electronic failure! This eliminates the need for mechanical locking cylinders which are prone to wear and often the target of abuse.

1. Remove the two anti-tamper screws using the screwdriver in the Emergency Tool Kit.



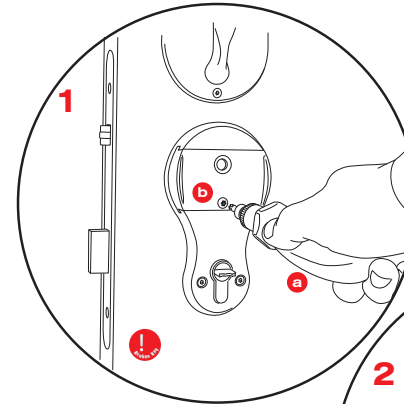
2. Lift the cover plate away to reveal the battery compartment.

3. Line up the Emergency Tool and slide it over the spindle until it stops.

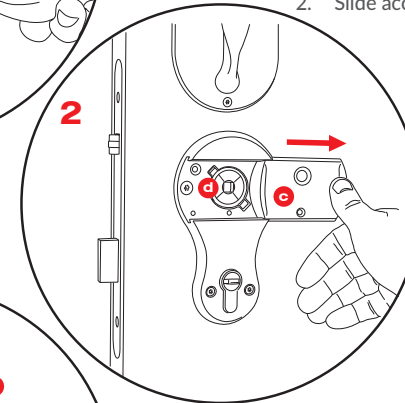
4. Rotate the Emergency Tool to unlock the door. In the case of double action - anti-barricade doors; the tool can also be used to pull the door open in the outward direction overcoming any resistance by the service user from inside!

Secondary Override Operating Instructions Twin-Tech (PR3S)

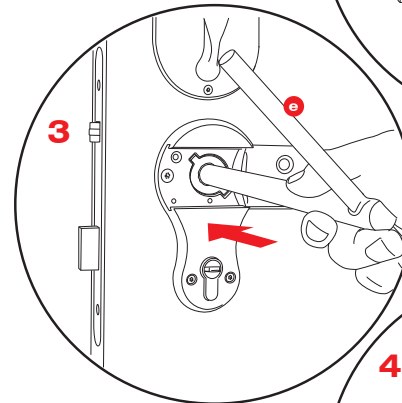
1. Using the screwdriver (a) remove the anti-tamper screw (b)



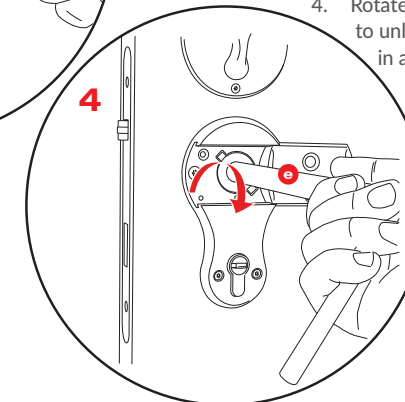
2. Slide access plate (c) to expose spindle (d).



3. Align multi-tool (e) and slide over spindle (d).



4. Rotate multi-tool (e) to engage tool and turn to unlock. Pull multi-tool (e) to open the door in an outward direction.



Primera Limited, Unit 8 Bankfield House, 250 Bristol Avenue, Blackpool, FY2 0JF

t 0330 0580988 f 01253 508652

e sales@safehingeprimera.com w www.safehinge.com