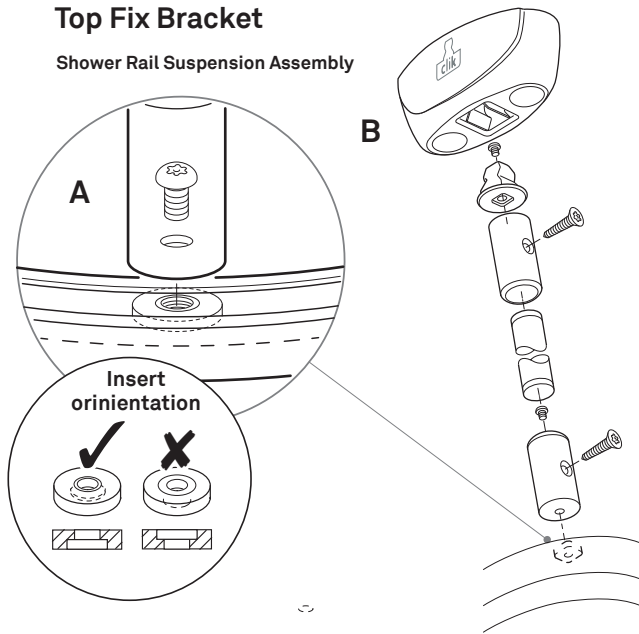
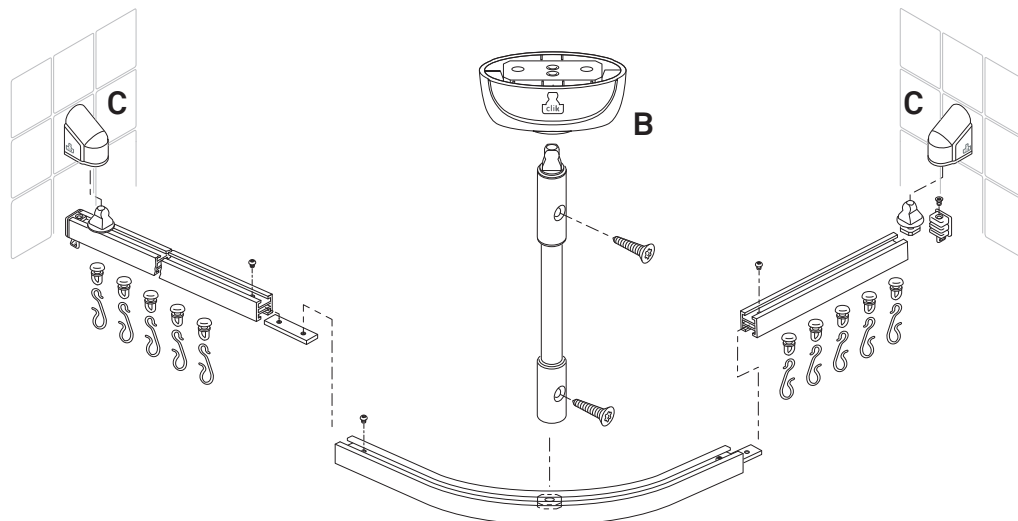


Top Fix Bracket

Shower Rail Suspension Assembly



1. Cut suspension pole to required length.
 2. Slide on both end caps to mark fixing holes.
 3. Remove the end caps and using a suitable bit, drill pilot holes into the pole.
 4. Secure the top end cap to the pole using pin torx screws provided.
 5. Secure bottom end cap to the glide block in the track as illustrated A.
- Note: When fixing the curtain track hanger block ensure they are fitted with the tappex insert in the correct orientation. See inset at A.
6. Insert the pole assembly in to the bottom end cap and secure using screws provided.
 7. Klik top fix bracket B on top of pole assembly.
 8. Klik complete track assembly into the two mounted wall fix brackets C. Hold up and mark the fixing positions for the top fix bracket B and secure in position with fixings provided.
 9. Check assembly collapses under load.



SAFEHINGE PRIMERA[®]

LIFESAVING DETAILS

SOP095 Revision (2)



Fitting Instructions

All CLIK™ products are designed to reduce the potential ligature risks within mental health establishments and places where there is a risk of self-harm. As such they should be carefully installed by a tradesperson, suitably equipped to ensure a professional and risk free installation. Unless specifically stated otherwise, the screws provided with all CLIK™ products are stainless steel for corrosion resistance and of the 6 lobe-pin anti-tamper variety. Under no circumstances should the screws be substituted with conventional fixings.

Only use the anti-tamper screws provided. Do not use impact drivers.

Tools Required

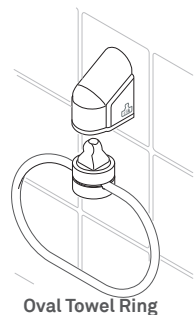
Drill	Combination Square
Hex Socket Screwdriver	Pencil
T20 Pin-Torx Bit	Straight Edge
T15 Pin-Torx Bit	Tape Measure
T10 Pin-Torx Bit	
Drill Bits 5.5mm	

Patent No.GB2504710.

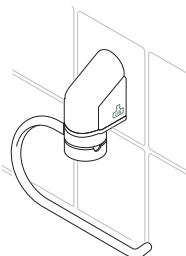
Contents

Page 2	Wall mount fittings.
Pages 3-5	Fitting the wall mount bracket
Page 6-7	Fitting the top fix bracket
Page 7	Top fix fittings
Page 8	Shower track assembly

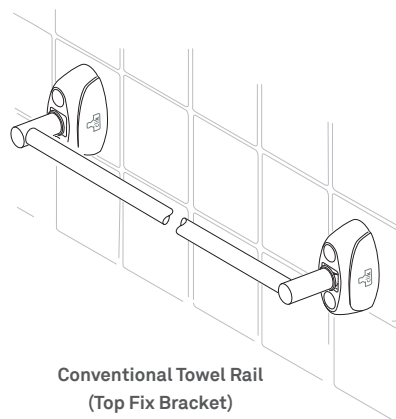
Wall Bracket Mounted Products



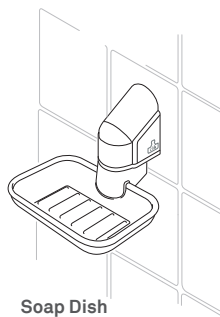
Oval Towel Ring



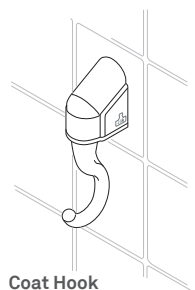
Oval Toilet
Roll Holder



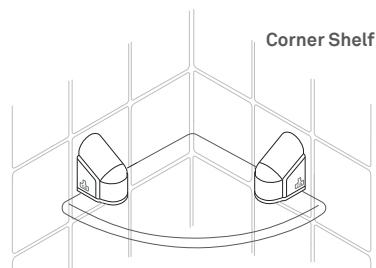
Conventional Towel Rail
(Top Fix Bracket)



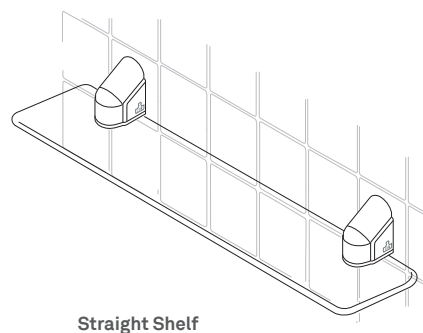
Soap Dish



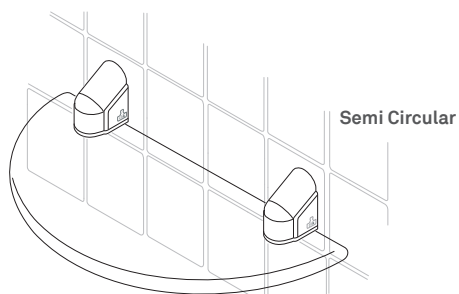
Coat Hook



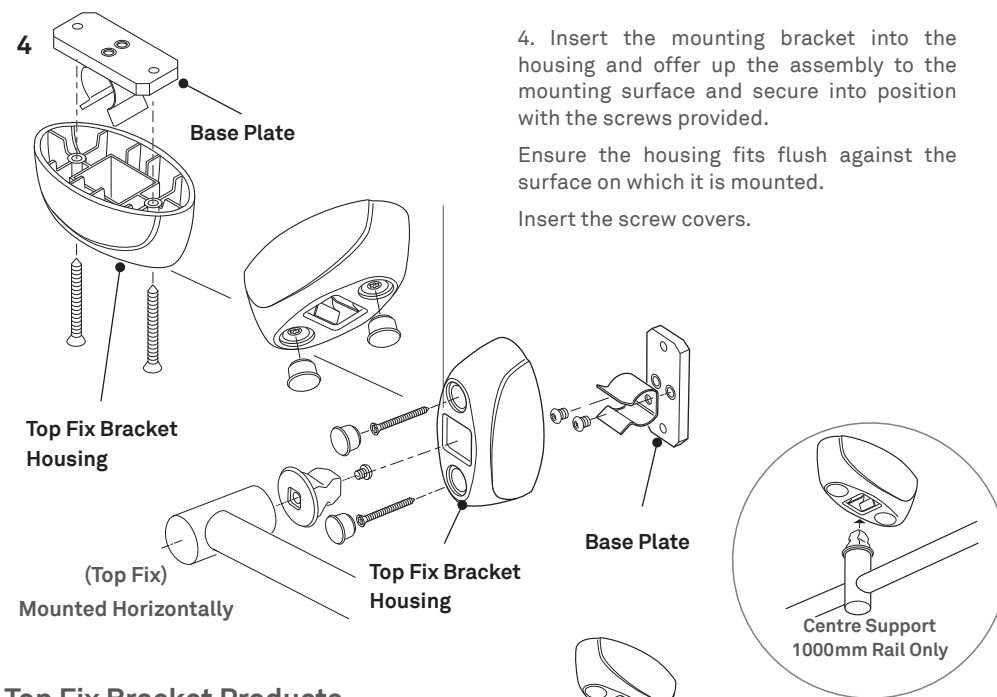
Corner Shelf



Straight Shelf

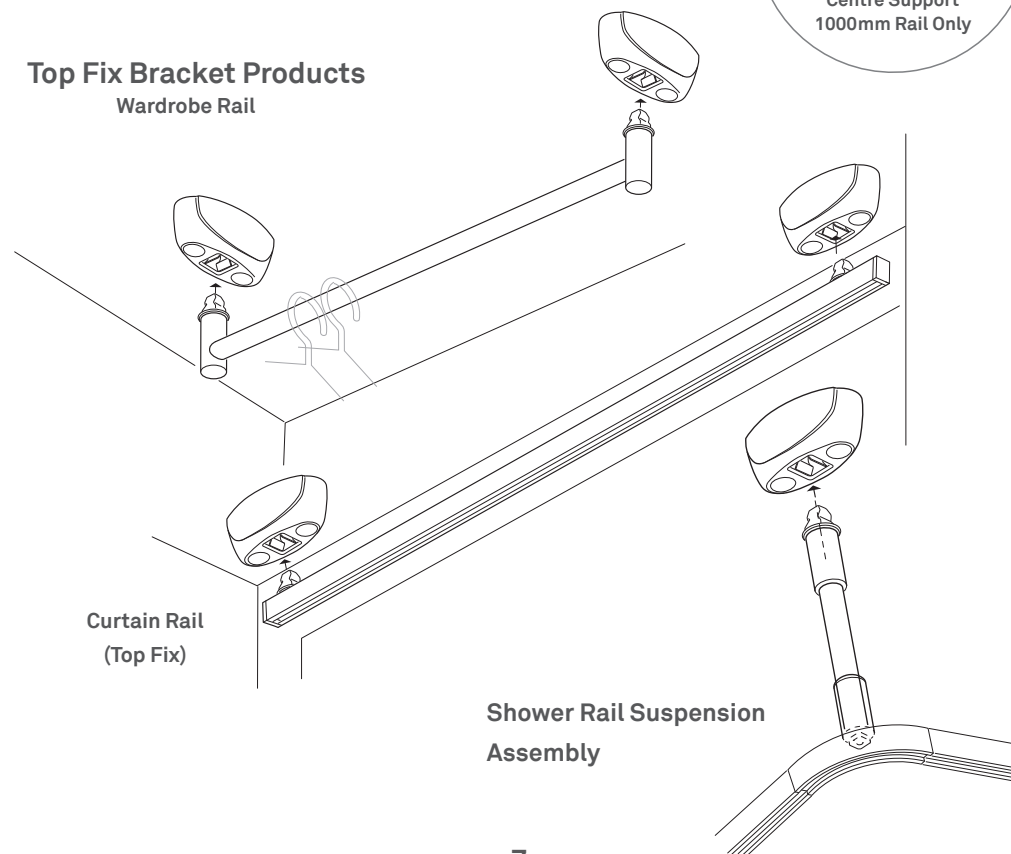


Semi Circular



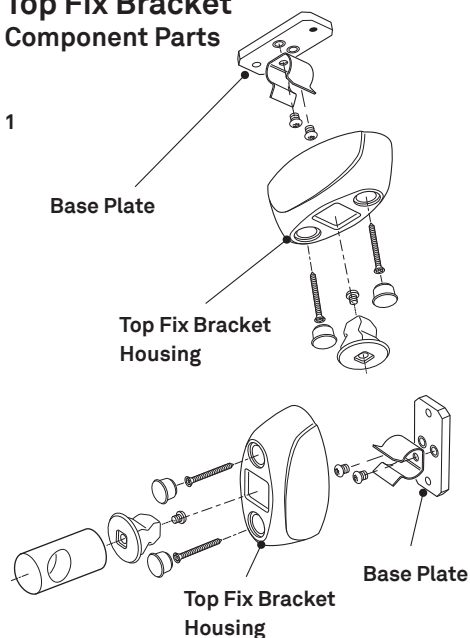
Top Fix Bracket Products

Wardrobe Rail



Top Fix Bracket Component Parts

1



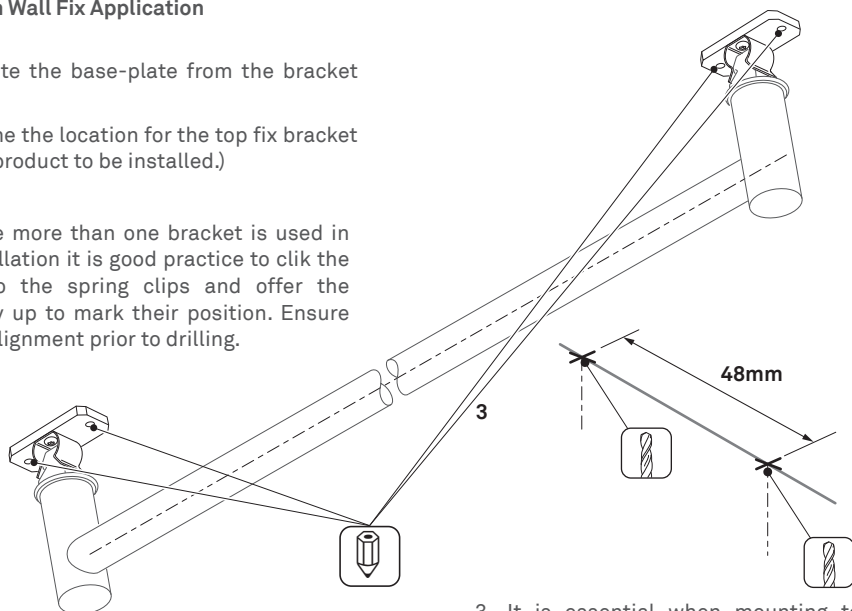
Top Fix Bracket

Shown In Wall Fix Application

1. Separate the base-plate from the bracket housing.

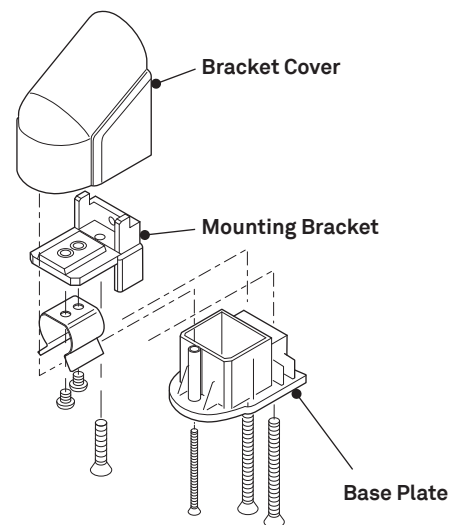
(Determine the location for the top fix bracket with the product to be installed.)

2. Where more than one bracket is used in the installation it is good practice to click the item into the spring clips and offer the assembly up to mark their position. Ensure correct alignment prior to drilling.

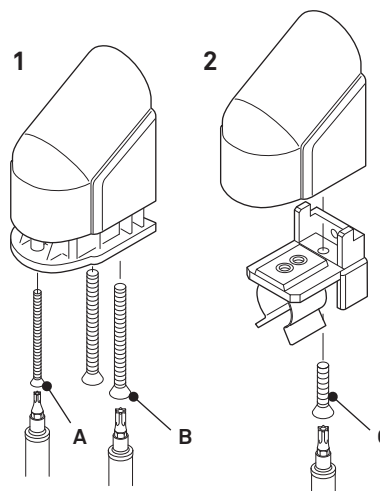
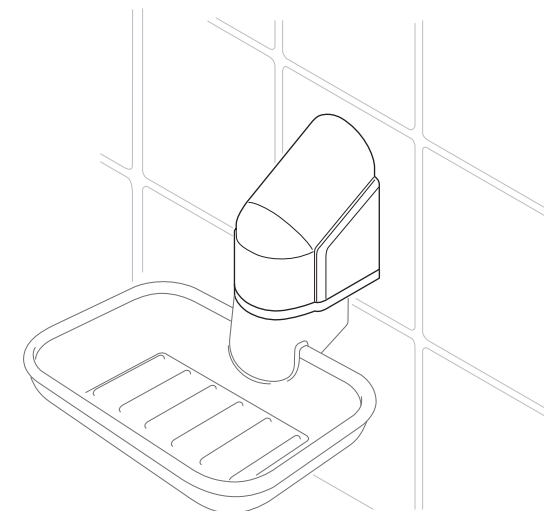


3. It is essential when mounting to a wood or laminate surface to drill a pilot hole using a suitable drill bit.

Wall Bracket Component Parts

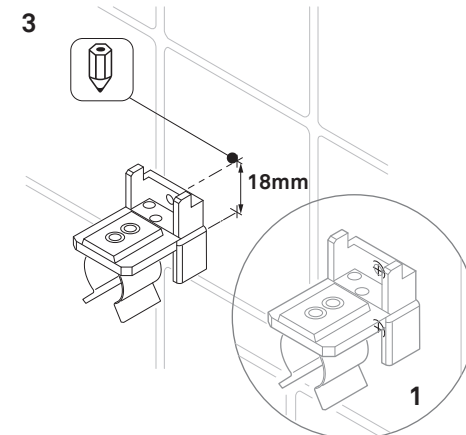


(Determine the location for the wall bracket with the product to be installed.)



1 To disassemble the wall bracket unscrew the T10 Torx Screw A at the front of the bracket. Using a T20 Pin Torx driver remove the remaining two machine screws B to separate the base-plate from the mounting bracket.

2. Remove the machine screw C and slide the bracket cover off.

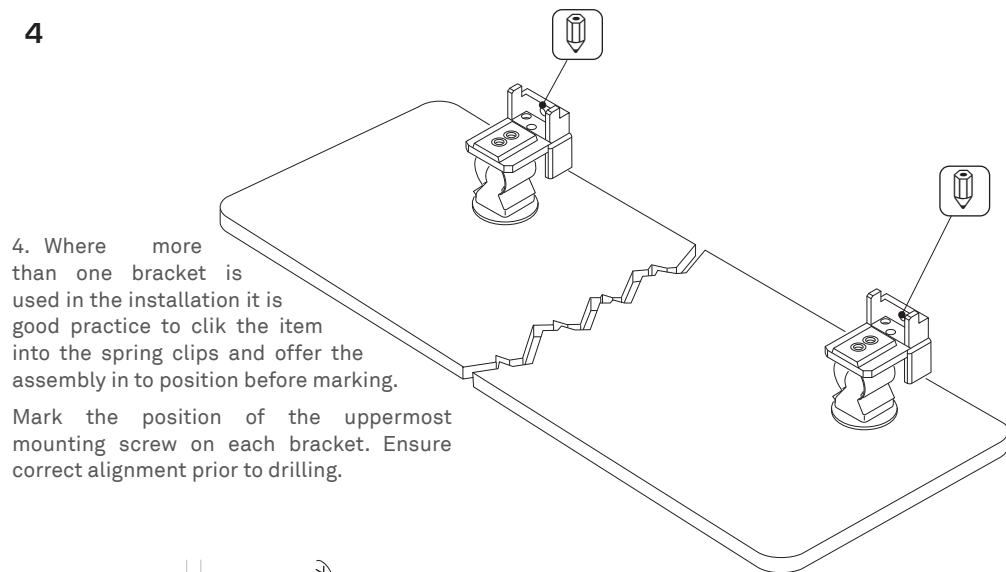


3. Using the mounting bracket as a guide, mark the position of the uppermost mounting screw.

Measure and mark a line 18mm vertically down from the centre of this point for the lower fixing point.

Before drilling, use the bracket to confirm alignment inset 1. Please refer to figure 4 on page 4 for additional information.

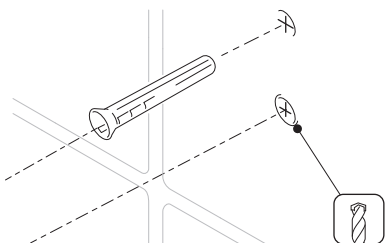
4



4. Where more than one bracket is used in the installation it is good practice to click the item into the spring clips and offer the assembly in to position before marking.

Mark the position of the uppermost mounting screw on each bracket. Ensure correct alignment prior to drilling.

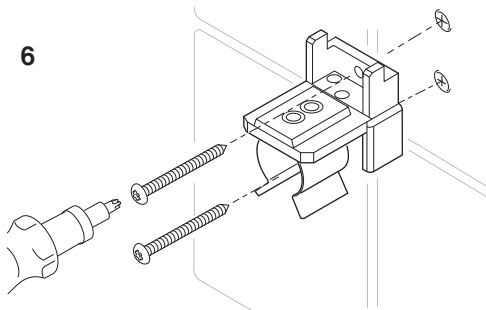
5



5. When mounting to a timber laminated surface use a 3mm HSS drill bit to create pilot holes for the screws.

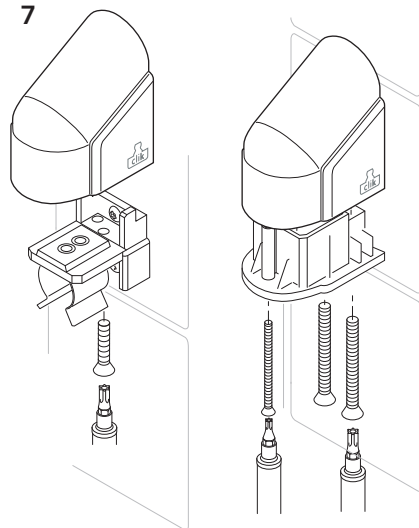
When mounting on to a wall (or tiled surface) use a 5.5mm masonry bit for the wall-plugs provided.

6



6. Fit the bracket using the fixings supplied. Ensure mounting bracket is securely fastened to the wall.

7

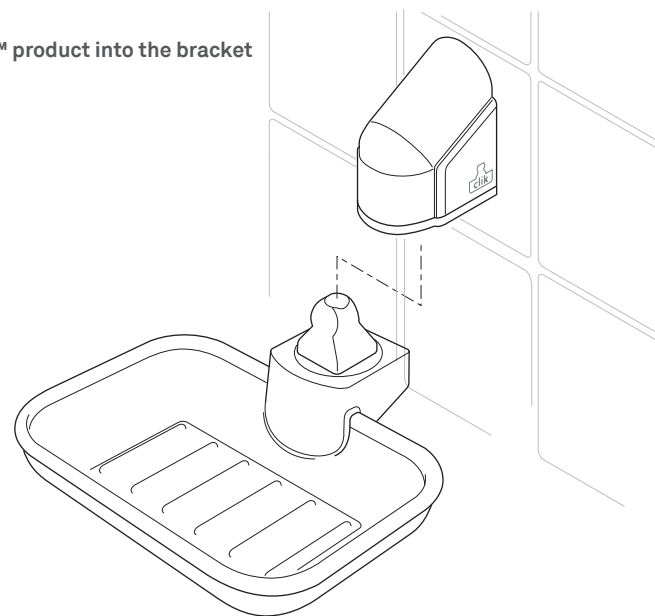


7. Refit the cover and base-plate using the screws provided.

Important Note: It is imperative that there are no gaps between the wall bracket cover and mounting surface.

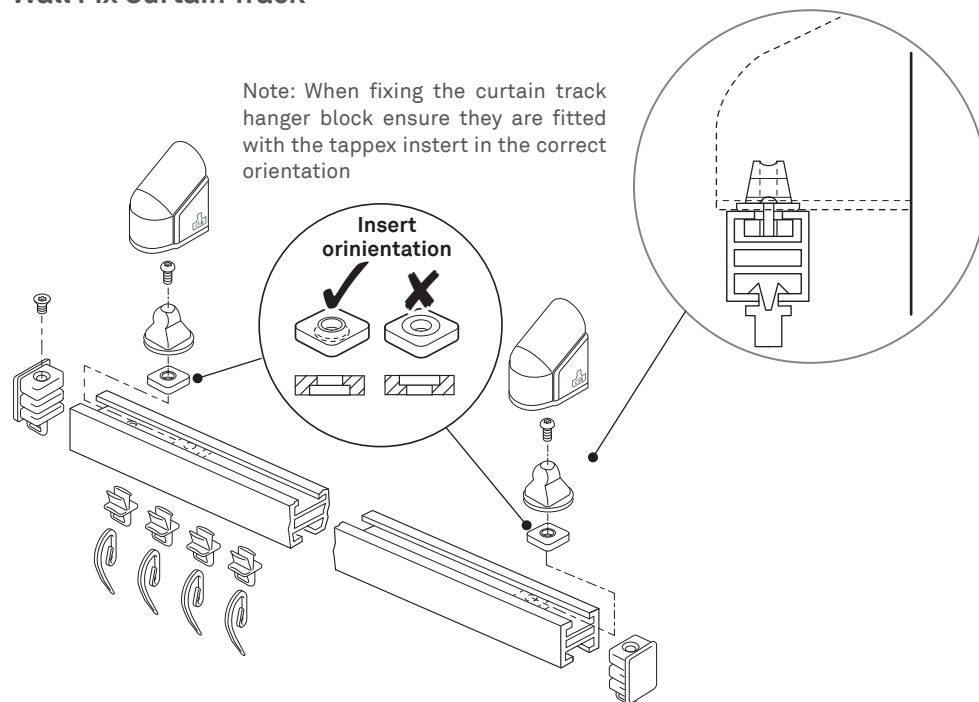
4

CLIK™ product into the bracket



Wall Fix Curtain Track

Note: When fixing the curtain track hanger block ensure they are fitted with the tappex insert in the correct orientation



5