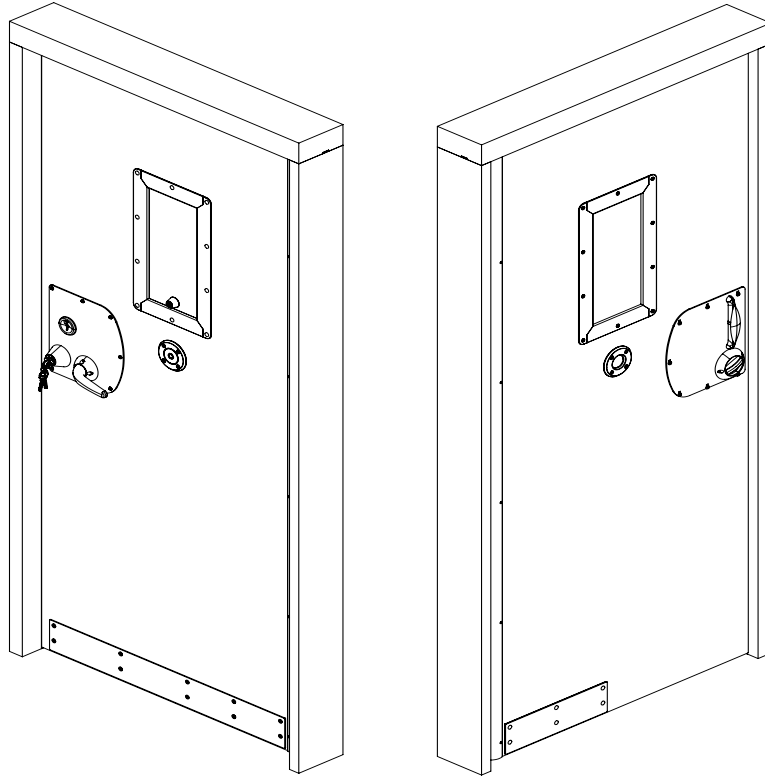


CUSTODIAL DOORSET DATA SHEET

TDS015 REV 2

SAFEHINGE[®]
PRIMERA

PRODUCT OUTLINE



Designed and engineered in collaboration with Custodial and Prison facilities, our timber-based Custodial doorset offers a robust and secure solution suitable for even the most challenging of applications all the while providing a protective environment focusing on the mental health considerations of it's user through the use of reduced institutionalised aesthetics and anti-ligature hardware.

Recommended Use Case

The Safehinge Primera Custodial doorset is recommended for use within Prison and Custodial applications in which the increased levels of Robustness offered by the doorset are an expectation.

Doorset Specification

- The Safehinge Primera Custodial Doorset is designed for use as a single occupant bedroom doorset.
- Anti-Barricade / Anti-Hostage functionality to ensure the well being and safety of both inmate and staff.
- Single leaf, inward opening only door to ensure the highest level of robustness in response to attacks from within.

PRODUCT PERFORMANCE

Third Party Certification

Certified by the third party certification scheme, Q-Mark, to ensure consistent product performance and quality.

Environmental Certification

The Custodial Doorset is manufactured with FSC compliant materials.

Fire Performance

Non fire rated option

FD30 and FD60 under Field of Application WF541101

Smoke Performance

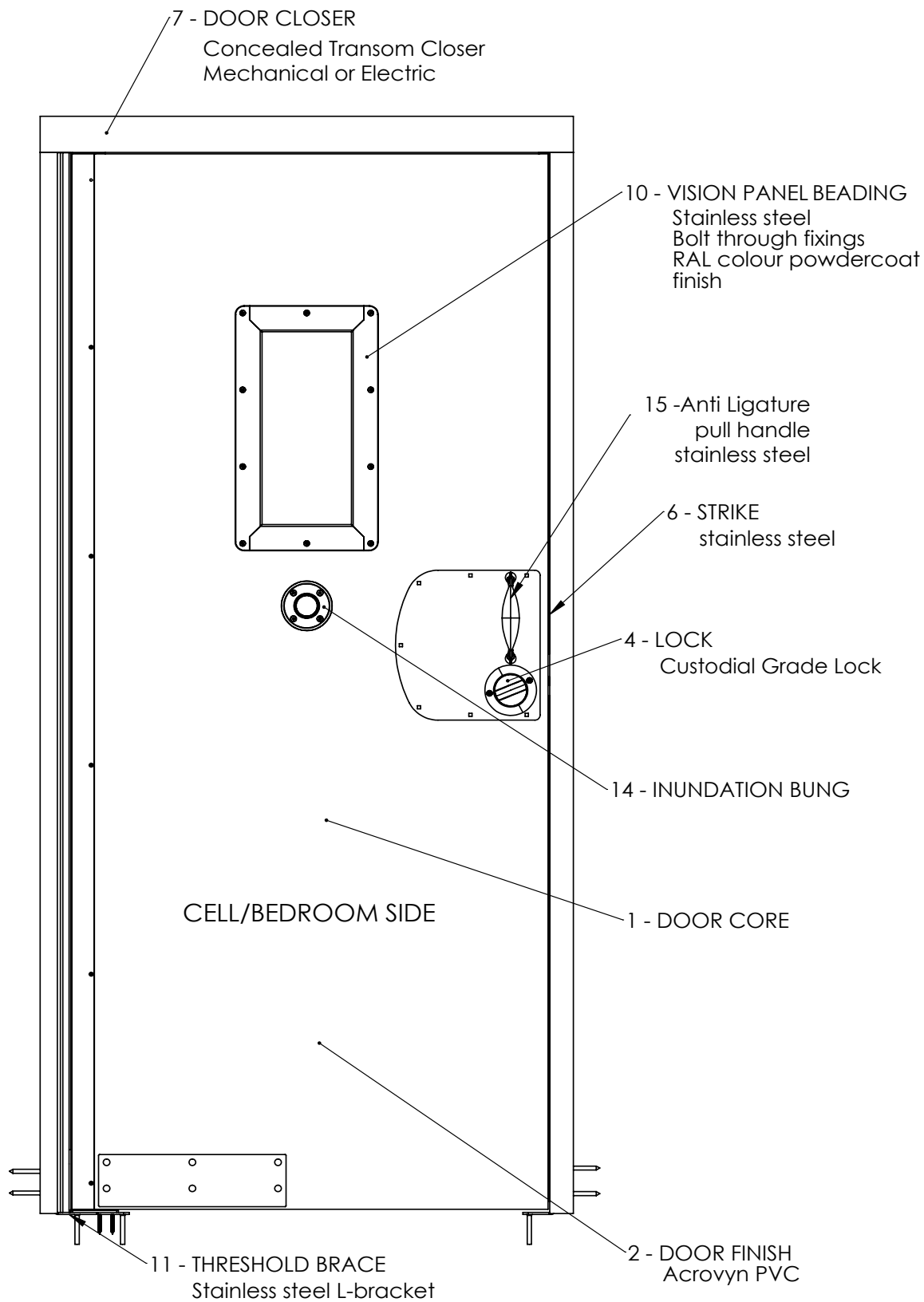
Uses Certifire approved Smoke seals tested to BS 476-31:1:1983

Mechanical Performance

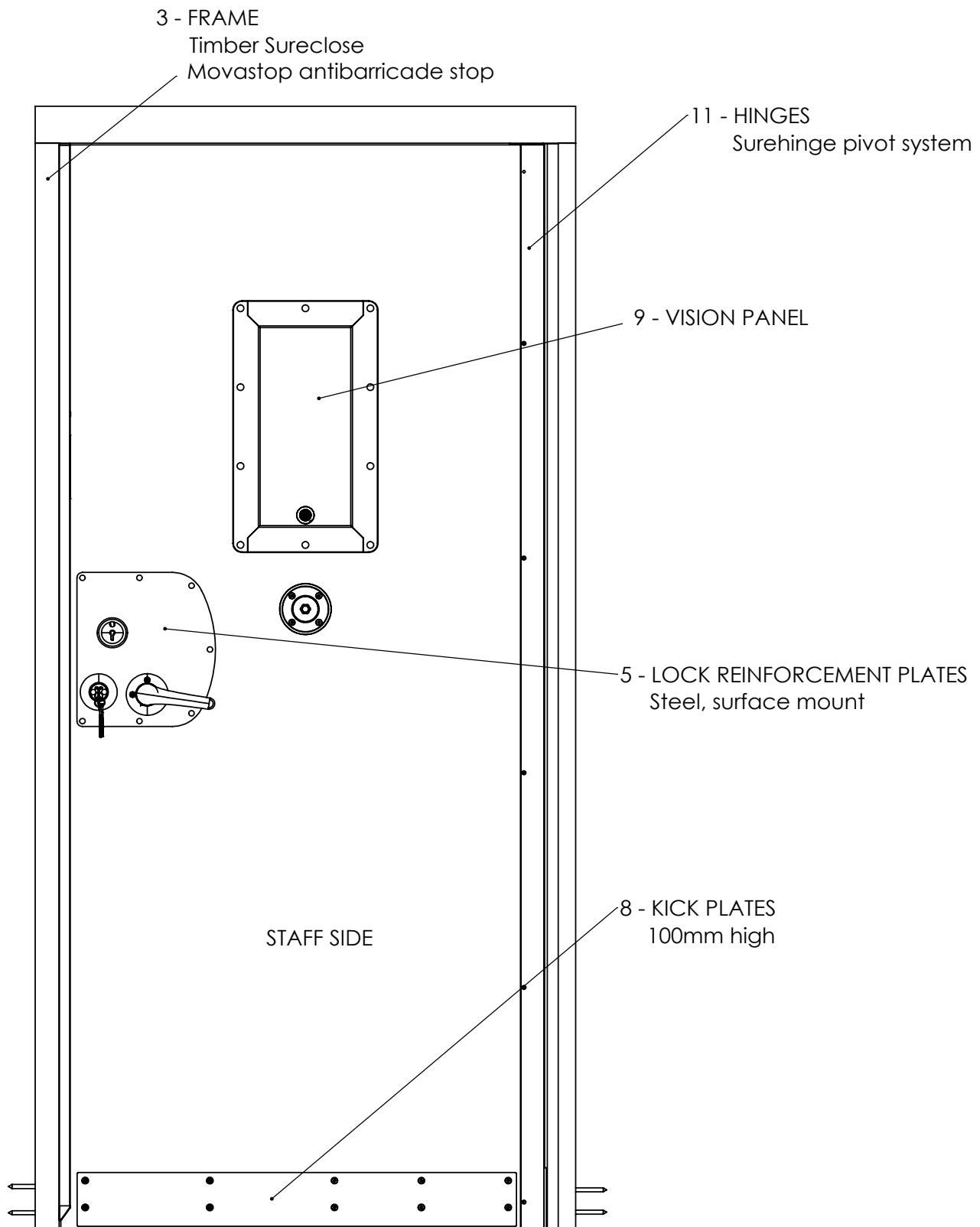
Independently tested by Scottish Prison Services to assess Doorset robustness through a variety of rigorous custodial standard tool and body weight attacks.

For more information please get in touch.

PRODUCT DIAGRAM



PRODUCT DIAGRAM

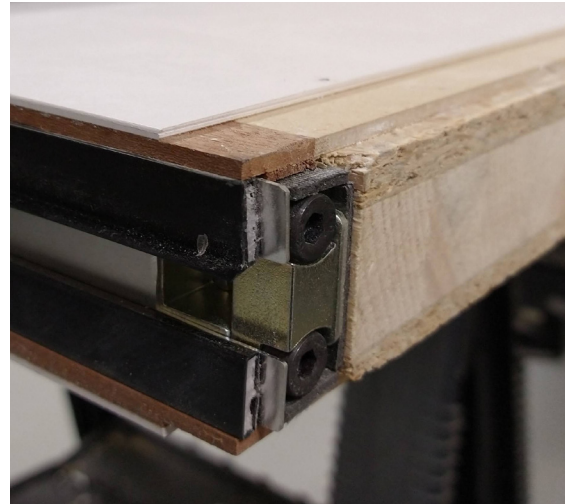


DOORSET SPECIFICATION

1) Door core

Robust laminated timber door core.

- Hardwood lipping on the top, bottom and closing edges of the door.
- Aluminium anti-fingertrap profiles recessed into the door facing.



2) Door face material

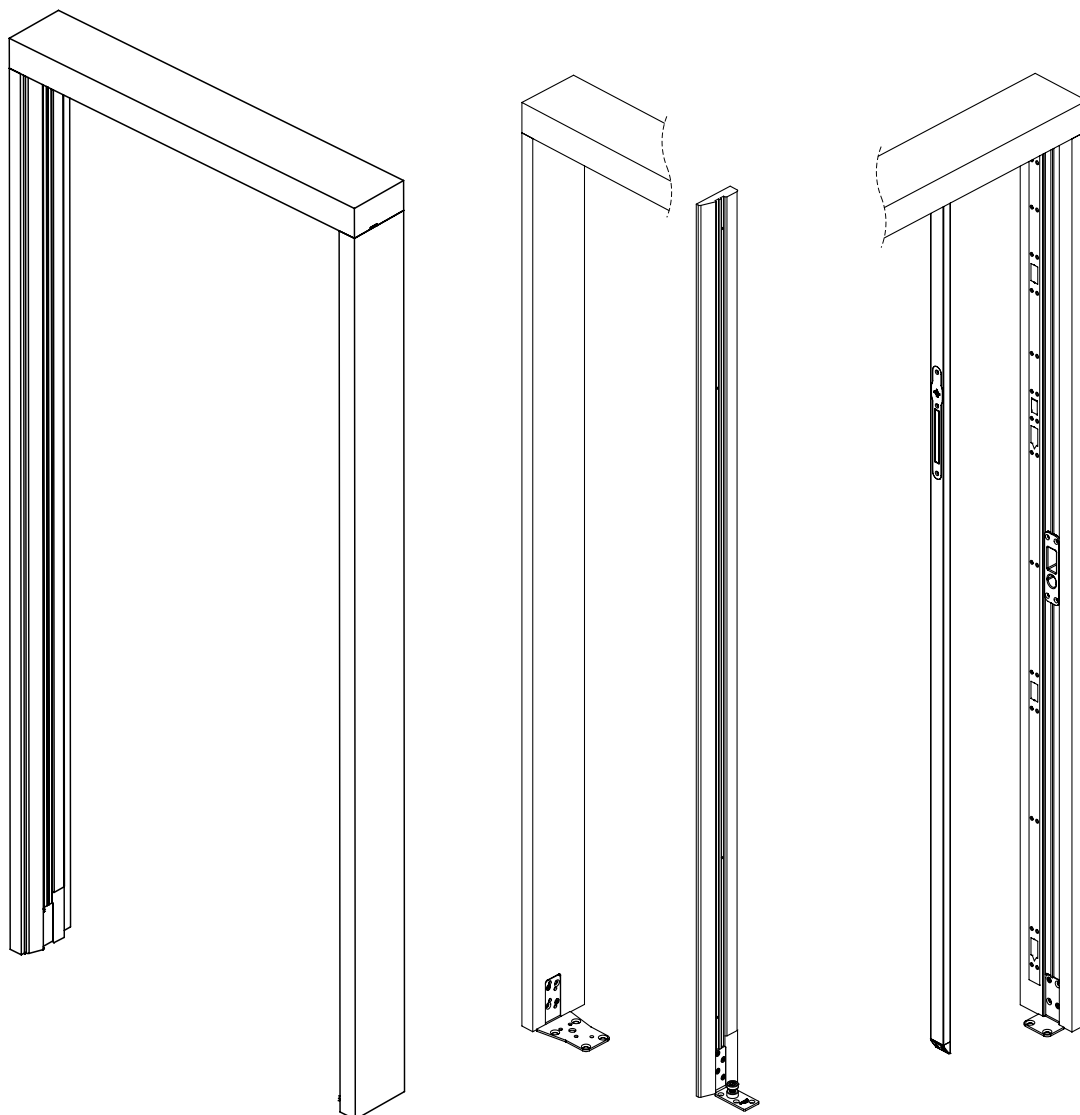
In addition to the facing required by the core manufacturer the Custodial Doorset is reinforced by the application of an additional PVC facing on either side of the leaf. This PVC facing offers greater impact resistance and improved cleanability compared to alternatives.

DOORSET SPECIFICATION

3) Frame

The Safehinge Primera Custodial Doorset frame is largely based on the design of the Safehinge Primera 'Sureclose' timber frame offering with additional reinforcements included where necessary for improved robustness.

- Frame head and jambs manufactured from sapele hardwood.
- Closing and hanging jambs are to be manufactured as per Safehinge Primera guidelines.
- Anti-Barricade functionality provided by the Safehinge Primera 'Movastop' with single Life-Line key access and parking station supplied loose.
- Architrave profiles supplied loose.

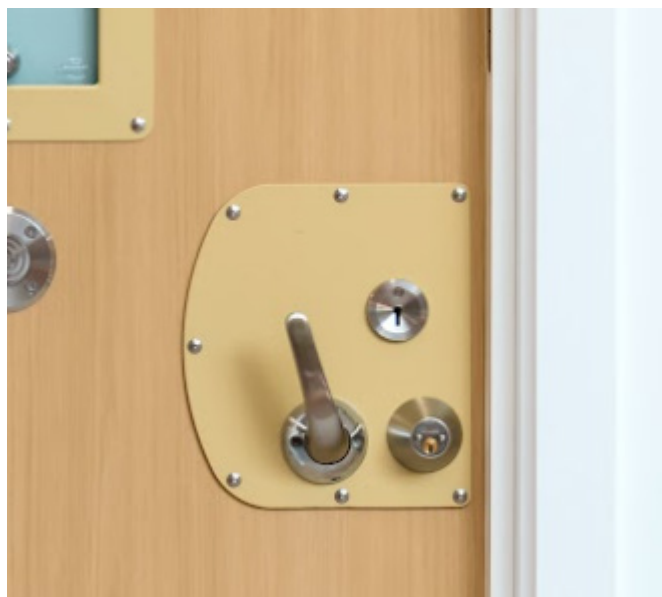


DOORSET SPECIFICATION

4) Lock

Specifically engineered for use in custodial applications the SHP Custodial Doorset has been designed to accommodate a custodial grade locking solution.

Lock supplied and fitted by others



5) Lock Reinforcement Plates

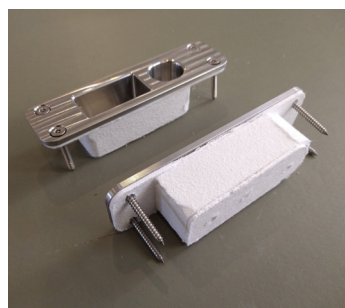
To ensure improved robustness, the lock is reinforced on both the opening and closing face by steel reinforcement plates.

- Stainless steel.
- Custom powdercoat finish on request.
- Surface mounted with intumescent backing via bolt through fixings.
- Supplied and fitted by others

6) Strike Plates

Stainless Steel Chubb lock compatible strike plate.

- Fully enclosed keeps.



7) Transom Door Closer

As part of the Surehinge pivot system the SHP Custodial Doorset utilises a transom door closer concealed within the frame head. As well as allowing the closer to act as a pivot point, concealing the door closer within the frame head protects against tampering/damage and reduces potential ligature risks found in face mounted offerings.

- Factory fitted by Safehinge Primera.
- Mechanical Closer offered as default however Electronic Free Swing and Hold Open variants available upon request.



DOORSET SPECIFICATION

8) Kick plates/pivot reinforcement plates

To ensure improved robustness the bottom pivot is reinforced with steel plates on both faces of the door.

- Factory fitted by Safehinge Primera.
- Stainless Steel
- Bolt through fixings.

On request, these reinforcement plates may be extended across the entire width of the door to act as kick plates.

Default finish or RAL powdercoat on request.



9) Vision panel

Incorporates a vision panel specially designed for the environment to withstand determined attacks. Features additional toughened glass on the cell side whilst also offering a layer of fire glass to ensure fire protection.

Utilises horizontal banding to differentiate between the open and closed state. Banding can be custom printed upon approval by Safehinge Primera.

Operated by staff only 'Lifeline' keys for observations.

- Optional door viewer in place of a vision panel



10) Vision Panel Beading

2mm stainless steel bead securing the vision panel within the door.

Powdercoat finish on request.

11) Hinging

The Custodial Doorset features use of the Safehinge Primera 'Surehinge' anti-fingertrap pivot system as it's hinging mechanism.

- Door pivots between the frame head mounted transom closer and a floor mounted pivot.
- Aluminium hinge profiles can be supplied with the default SAA finish or, on request, RAL powdercoat or oak finished.
- Reinforced with additional face fixings down the profile face on both sides of the door.

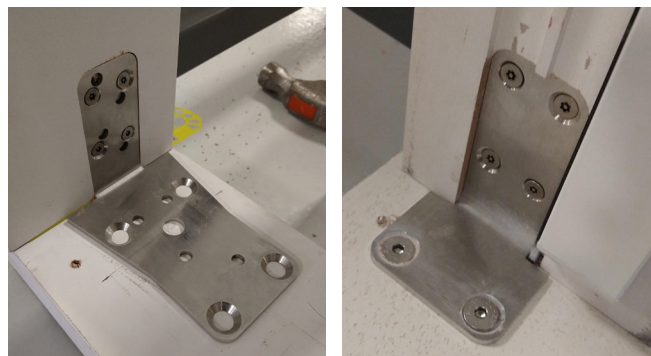


DOORSET SPECIFICATION

12) Threshold Brace

For further reinforcement of the doorset, a threshold brace is fitted at the base of both frame jambs and anchored to the floor creating a secure frame leg to floor connection.

- Stainless steel L-bracket.
- Floor construction must consider a flush connection to the floor.



13) Floor stop

As a pivoted doorset opening angle restrictions apply. To protect the doorset from damage caused by exceeding these restrictions a floor stop must be used.

- Floor stops must be fitted within the cell to limit trip hazards in the corridor.
- Depending on the construction of the cell, a wall stop may be used in place of a floor stop.

14) Inundation bung

Subject to fire suppression strategy used, the door may be fitted with a centrally fitted inundation bung to provide extinguishing access to the cell without the need for opening the door in the event of fire.

- Stainless steel bolt through collars with removable bung.
- Operation via Prison Key supplied by others.



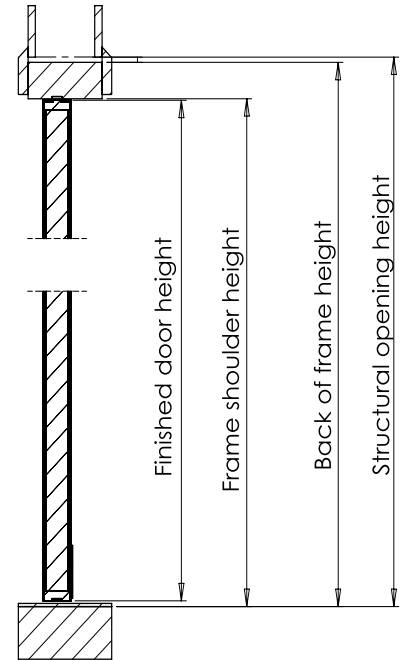
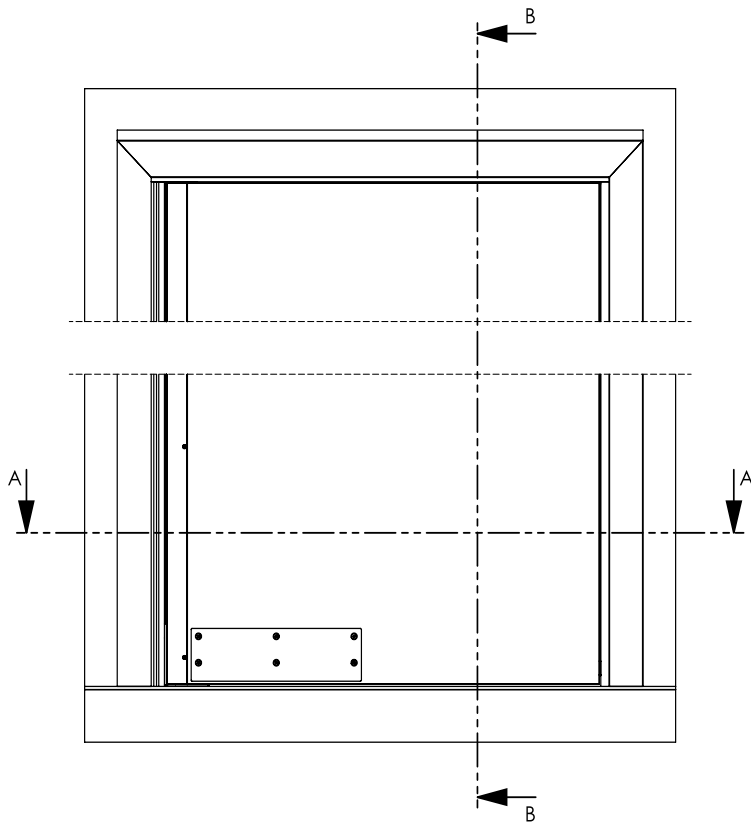
15) Handle

Safehinge Primera offers a range of anti-ligature handles to assist in opening the door.

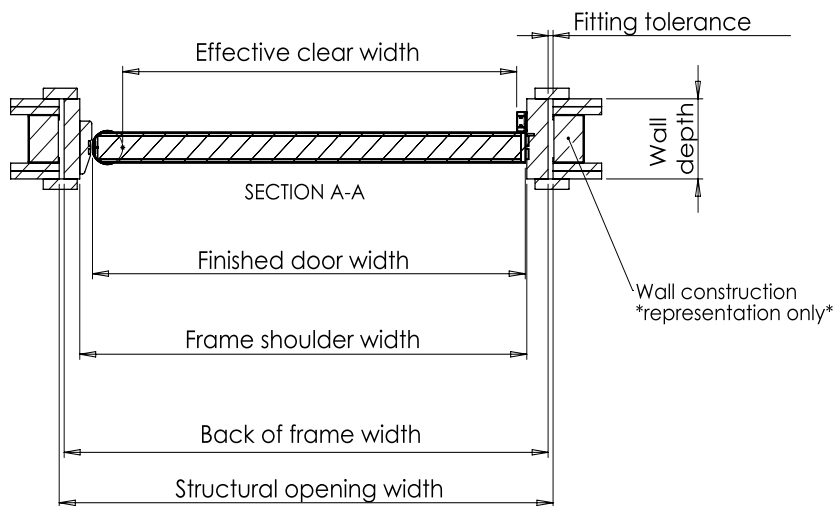
- Pinch grip handle supplied as default, secured to reinforcement plate.
- Alternate handles available, surface mounted to door.
- fitted to the opening face / cell side of the door.



CONSTRUCTION VARIABLES



SECTION B-B





t 0330 058 0988

e info@safehingeprimera.com

w www.safehingeprimera.com

Blackpool Office

Unit 8 Bankfield House

250 Bristol Avenue

Blackpool

FY2 0JF

Glasgow office

44 Speirs Wharf

Glasgow

G4 9TH